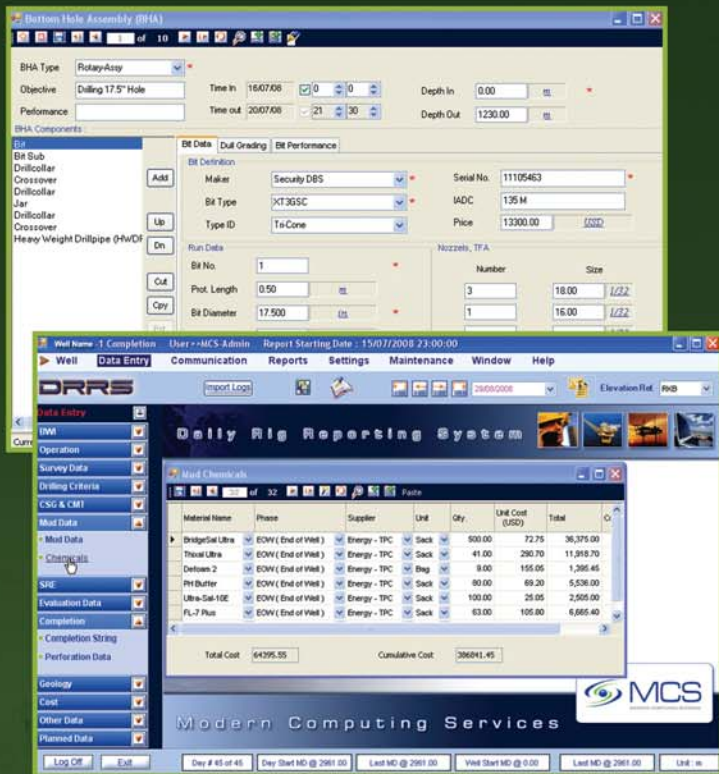


DRRS (Daily Rig Reporting System)

Data collection is the keystone of the reporting and performance evaluation process, while as, drilling supervisors are concerned mainly with the operation, so data collection and data entry should be in minimum time with minimum effort. DRRS allows the drilling supervisors to capture a large amount of data on daily basis on rig site in minimum time with minimum effort.

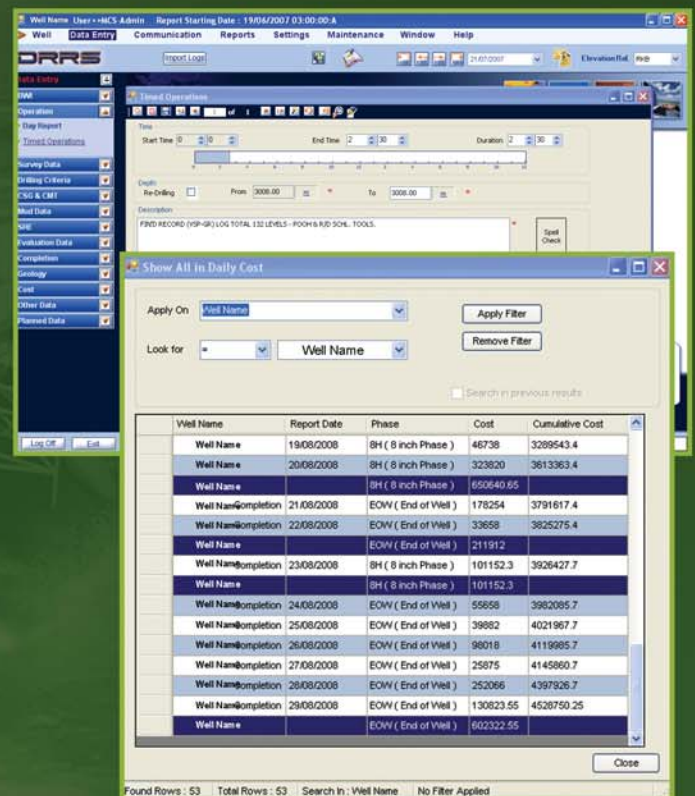


DRRS Features

- Data carry over tools.
- Data importing tools and copy / paste features.
- Data entry through look-up lists.
- Online multi measurement system.
- Online spell check feature.
- Auto calculation system: bit performance, well trajectory , etc.
- Smart and accurate Data QC System.
- User profile pre-setup.
- Expandable database structures and report forms without limitations.
- Secured two-way data exchange via internet.
- Secured data access for authorized persons.
- Powerful searching tools.
- File attachments feature: Excel, PDF, Word, images, etc can be attached to the well file and will be stored within the database.
- WITSML enabled .

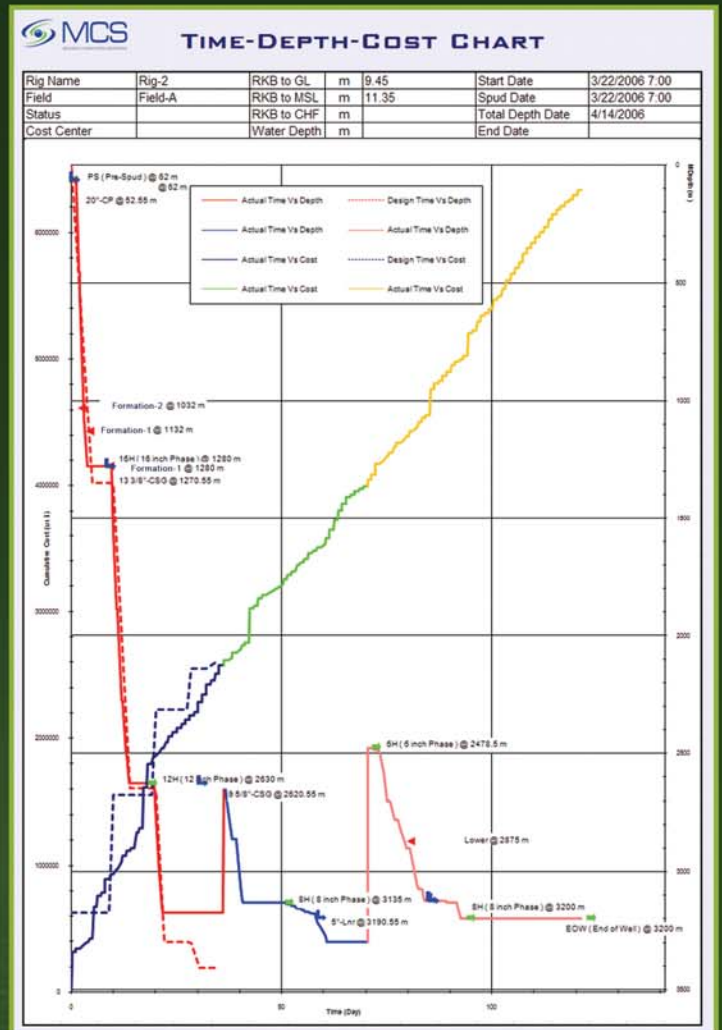
DRRS Functions

- Capturing drilling data on daily basis, such as:
 - Operation Time Breakdown.
 - BHA, Bit and Drilling Parameters.
 - Daily Cost.
 - Well Plan.
 - Geological Data.
 - Mud Data.
 - Material Movements.
 - Personnel.
- Transferring collected data into Master DataBase in main office.
- Generating daily reports : morning drilling report, daily cost report, BHA report, mud, survey, material, etc.
- Generating daily progress chart ; actual versus planned.
- Generating daily well trajectory plot, actual versus planned.



DRRS Benefits

- Comparing the way the drilling was planned and how it is actually drilled on daily basis.
- Collecting more data with minimum effort in minimum time.
- Improving the accuracy of collected data, and minimizing the human error.
- Field personnel can report changes and activities as well as having valuable well history and proposal on-site.
- Company reporting standardization.
- Electronic archiving for on-site drilling activity data, memos, and third party reports.
- Easy well data browsing.
- Easy-to-use interface which means less implementation, training and support costs.



Day Report

Start Time	End Time	Re-Drilling	From (m)	To (m)	Description
00:00:00 AM	01:00:00 AM	<input type="checkbox"/>	2,972.00	2,982.00	Cont. drilling 8 1/2" hole 10292m to 2982m ROP 10shr.
01:00:00 AM	01:30:00 AM	<input type="checkbox"/>	2,982.00	2,982.00	Circ bottom-up.
01:30:00 AM	03:30:00 AM	<input type="checkbox"/>	2,982.00	3,008.00	Cont. drill 8 1/2" hole 10292m to 3008m. (TD) ROP 13shr.
03:30:00 AM	04:30:00 AM	<input type="checkbox"/>	3,008.00	3,008.00	Swept hole W/008H Hi via pill. Circ. hole clean.
04:30:00 AM	06:30:00 AM	<input type="checkbox"/>	3,008.00	3,008.00	Flow check POOH wiper trip 1668. to 9 5/8" csg shoe @ 2572m. ROP

Multi Report Generate

Elevation Ref. 15/11/2005
Well Name: Well Name-3
Accumulate to: Well Name-3 15/11/2005
Report to Use: Company Daily Report (M)
Total No of Reports: 47
Selected: 6

Completion String

Expected Production Rates
Oil Rate: bbl/day
Gas Rate: M3/day
Completion String: Single Gas Completion
String Type: Single Gas Completion
PBTD: 2932.00

Part Type | Serial | Inner Diam (in.) | Part Description

Tubing Hanger	N/A		3-1/2" NEW VAM FMC TBO HOR
Tubing	N/A		3-1/2" NEW VAM TBO JTS
Pup Joint	N/A		3-1/2" NEW VAM TBO PUP JT
Flow Coupling	N/A		3-1/2" NEW VAM FLOW COUPLING
TRSSV	N/A		3-1/2" NEW VAM TR-SCSSV W/08-Profile
Flow Coupling	N/A		3-1/2" NEW VAM FLOW COUPLING
Tubing	N/A		3-1/2" NEW VAM TBO JTS
Flow Coupling	N/A		3-1/2" NEW VAM FLOW COUPLING
X-Nipple	N/A		3-1/2" NEW VAM X-NIPPLE size 2.813"
Tubing	2.99	3.94 New-Vam	9.68 2,690.16 3-1/2" NEW VAM TBO JT
Packer	2.90	5.93 New-Vam	1.96 2,699.84 3-1/2" NEW VAM 7" AHC HYD PWR
Chemical Cutter Nipple	2.88	3.94 New-Vam	0.46 2,701.80 3-1/2" NEW VAM CHEMICAL CUTTER LC
Tubing	N/A	2.99 3.94 New-Vam	9.71 2,702.26 3-1/2" NEW VAM TBO JTS
Flow Coupling	N/A	2.97 2.11 New-Vam	1.74 2,711.47 3-1/2" NEW VAM FLOW COUPLING